

NLC

User Handbook

 **Nightingale**



2020 Series

nightingalechairs.com

Congratulations, this NLC™ is yours.

Please read and understand this user handbook
before operating this office chair.



2020D-FL

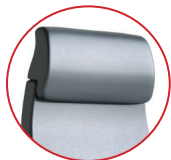


2020-A



2020

Using & Adjusting Your NLC™



A

Adjustable Headrest

Lift headrest to desired position and headrest locks automatically. To lower, push down.



B

Lumbar Support

To adjust lumbar position, up and down, lift lumbar knob to desired height and release.



C

Tension Knob

Turn knob clockwise to increase tension, turn knob counter-clockwise to decrease tension.



D

Pneumatic Height Adjustment

To lower, tilt the lever up while seated. To raise, tilt the same lever up with no weight on seat.



E

Infinite Position Tilt Lock

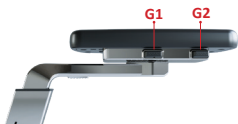
To lock, push lever down. To unlock, pull lever up. Gently lean into back to activate the positive back lock release.



F

Seat Slider

Pull out slider button to unlock, move seat to desired position while seated and release to lock.

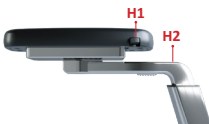


G

4D Adjustable Arms

G1 Press to adjust width, move to desired position and release to lock.

G2 Press to pivot arms, move to desired position and release to lock.



H

4D Adjustable Arms

H1 Press to adjust depth, move to desired position and release to lock.

H2 Pull arms up to desired height and they will lock automatically. Bring arms to maximum height to reset to lowest setting.



I

Flip-Up Arms

Lift arm at arm pad and push backward to lock in upright position. To return, pull down arm and it will drop back into horizontal position.

J

Fixed Loop Arms

Standard closed loop, polished aluminium arms with polyurethane arm pads.

Care Instructions

With regular care and maintenance, your NLC™ will provide many years of superior performance and satisfaction. To maintain the quality of your Nightingale chair, please follow the cleaning instructions outlined here.

Mechanism

Once a year, lubricate using light sewing machine oil or similar product. (Spray with plastic straw attached to sprayer). NOTE: To prevent dripping, avoid over lubrication which may cause damage to surrounding surfaces.

Plastic Parts

To clean, spray with a mild detergent and wipe off using a damp (water) cloth. Do not use abrasives or excessive amounts of cleaner.

Frame

Chrome frames can be cleaned by wiping with a damp cloth and any mild detergent.

*The instruction for the care and maintenance of Nightingale Products are provided to you as a service. No warranty is implied since results may vary.

FOR MORE INFORMATION, PLEASE VISIT

www.nightingalechairs.com



Nightingale Corp.
T 1.800.363.8954
F 1.800.637.6784
www.nightingalechairs.com
info@nightingalechairs.com



RECYCLABLE