

GET COMFORTABLE

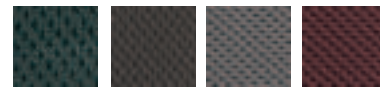
WITH YOUR DECISION

Creating the SXO that's just right for you has never been easier. You can choose from Mystic and Era fabric's many vibrant colors for your SXO's seating surface. Consider a field installable headrest for added comfort and the perfect finishing touch.

GRADE 1 - MYSTIC



YELLOW RED GOLD BLUE NAVY



GREEN BLACK GREY BURGUNDY

GRADE 4 - ERA



INK STONE PERSIMMON CADET BASIL PINE STERLING



LEMON LIME MERLOT CHILI CONCORD CHAR

NOTE: Due to variances in dye lots and offset printing, Nightingale does not guarantee that the colors shown will be a perfect match to actual colors. All items shown are available at the time of this printing. You will be notified by Nightingale should your desired chair model and/or option not be available at the time of your order.

NATIONAL
MASTER
STANDING
OFFER

E60PQ-030004/027/PQ



Warranties

Under the Nightingale Corp. warranty, all claims must be made within the time period specified. Nightingale Corp. offers a Lifetime Limited Warranty, unless otherwise specified, from the date of purchase by original purchaser, on all non-moving metal components. Nightingale Corp. also warrants that self-skinned urethane parts, plastic shells, casters, wood parts and mechanisms will carry a (5) five year warranty. Upholsteries will carry a (2) two year warranty. Pneumatic cylinders will carry a (10) ten year warranty.

General Warranty

This warranty does not apply to damage caused by accident, abuse, negligence, abnormal use or use with extreme climatic conditions. Due to the inherent nature of certain materials used, all furniture containing wood, fabric or leather is subject to minor variations or irregularities of color, grain and texture. Normal use is defined as a maximum of eight (8) hours a day, five (5) days per week. Normal climatic condition is defined as the temperature and moisture content range for human comfort and health. Compliance with applicable laws, regulation codes, certificates and manufacturing standards are disclaimed if this product is misused, improperly installed or modified in any respect (including without limitation, any change in fabric or mechanical components affecting stability, load capacity or load distribution) after shipment from the manufacturer.

Nightingale

Tel: (905) 896-3434
Toll Free: 1-800-363-8954
Fax: (905) 896-7011
Toll Free: 1-800-637-6784
E-mail: info@nightingalechairs.com
www.nightingalechairs.com



www.nightingalechairs.com

FIRST IMPRESSIONS ARE JUST THE BEGINNING

SXO creates a remarkable first impression with its sleek, striking appearance. This unique seating solution continues to impress by keeping your comfort in mind with innovative features like:

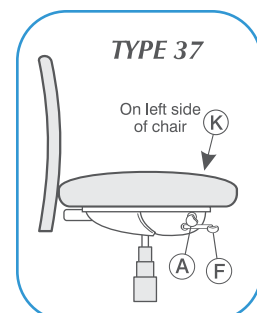


VERSATILITY BY DESIGN

The simplicity of SXO's design and function allows you to concentrate on the tasks at hand. Its refreshingly modern look fits perfectly with any office, meeting, conference or home office setting.



MECHANISM USER GUIDE



- A Tension Knob**
Pull knob out to adjust. Turn clockwise to increase tension, turn counter-clockwise to decrease tension.
- F Pneumatic Height Adjustment**
Pull lever up to lower seat to raise, pull lever up with your weight off seat.
- K Multi Position Synchro-Tilt Lock**
Pull lever up to unlock, push lever down to lock.

OVERALL DIMENSIONS

	Width	Depth	Height	Seat Height
G6100	27"	27"	37½"-42½"	16"-21"

44-232 Synchro-Tilt Intensive Task



G6100

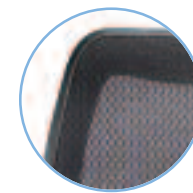
STANDARD FEATURES ON G6100

- Design Patented.
- Translucent ABLEX™ patterned weave mesh back provides generous lumbar support while allowing dynamic back movement. Allows air to pass freely, making it comfortable in all climates.
- Smooth activating INTELLI-RIDE™ synchro-mechanism with SOFT TOUCH™ telescopic side tension adjustment.
- Pneumatic seat height adjustment.
- 3.5° forward tilt adjustment.
- Positive back lock release.
- Easy to use, adjustable arms with lockable, finger-tip vertical movement for individual comfort and support.
- Contoured seat and back shell for ergonomic support.
- High density, high resiliency seat foam reduces sitting fatigue by minimizing pressure points and increasing blood circulation perforated 4-way stretch mystic fabric provides maximum durability and exceptional airflow.
- Contoured seat foam incorporates a "waterfall" design that gently slopes away from the legs, minimizing pressure on the thighs, promoting good posture.
- Patented all purpose back storage pocket built into the back frame allows convenient storage for inter company mail or personal items.
- 5 prong heavy duty nylon base.
- 2" dual twin carpet casters for ease of movement.
- Finish - mechanism, base, arms, casters and trim standard in black.
- California Fire Code #117
- Meets or exceeds ANSI/BIFMA standards.

G6100	SXO	GRADE 1 Mystic	Retail Price \$1130.00
		GRADE 4 Era	\$1215.00

OPTION

Description	Suffix	List Price Upcharge
Soft Tile Casters	TC	\$50.00
Upholstered Seat and/or Headrest Fabric Colors (C2: Gray; C3: Burgundy; C4: Blue; C5: Gold; C6: Red; C7: Yellow)		
Seat	(see above colors)	\$25.00
Adjustable Head	HR	\$100.00



BREATHE EASY

SXO's breathable translucent mesh back with Ablex™ patterned weave provides generous lumbar support while allowing dynamic movement. Air flows freely through this breathable mesh for added comfort in any environment.



CONVENIENT STORAGE POCKET

SXO's unique back pocket is an ideal storage space for your papers, or items you need to access quickly and easily.



ADJUSTABLE ARMRESTS

Generously appointed polyurethane arm pads are supported with easily accessible fingertip activated height adjustable arms for that perfect fit.



COMFORT WITHOUT END

High density, high resiliency seat foam offers unsurpassed comfort. Covered with four-way stretch, dual-layer, perforated Mystic fabric, SXO provides exceptional airflow and endless comfort.



INTELLIGENT COMFORT

SXO's Intelli-ride™ synchro mechanism features a 2:1 recline ratio, convenient Soft Touch™ side-tension adjustment, multi-position lock with positive back lock release, 3.5° forward tilt adjustment and pneumatic height adjustment.

